


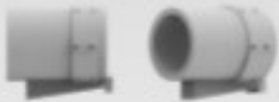
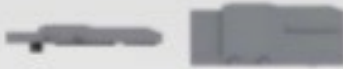

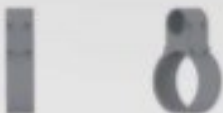



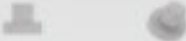



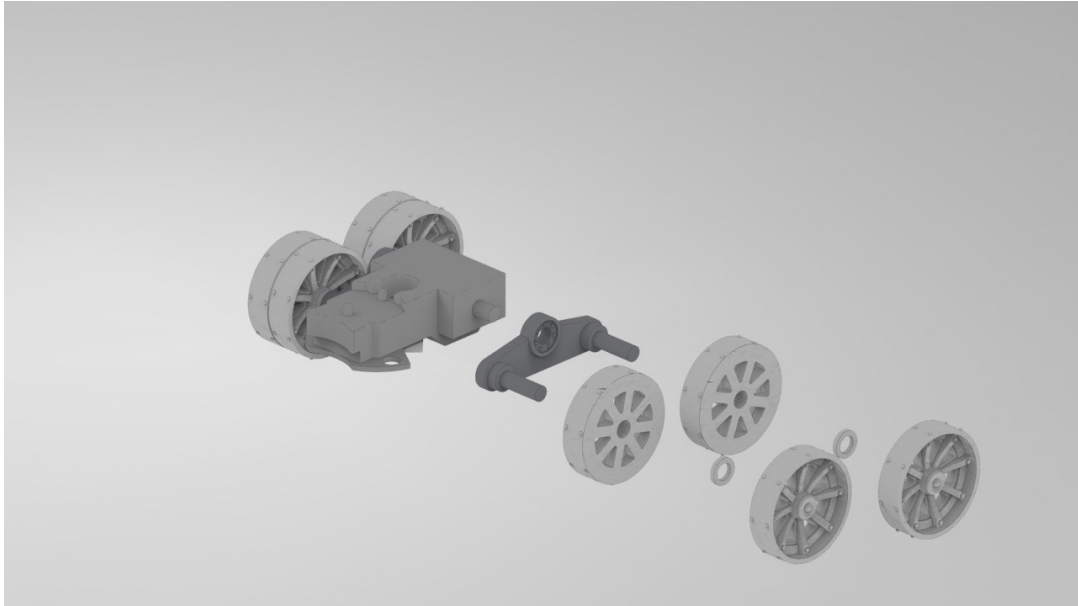


ASSEMBLY INSTRUCTIONS 28 MM HEAVY ARTILLERY

<u>PART NAME</u>	<u>NUMBER NEEDED</u>	<u>PICTURE</u>
Barrel Base 1	1	
Barrel Base 2	1	
Barrel Base 3	1	
Barrel Base 4	1	
Barrel Support	1	
Barrel	1	
Barrel Ring	1	

Barrel Rod	1	
Main Body	1	
Base Plate	1	
Turrent Pin	1	
Shields	1 + 1	
Right Leg	1 outer + 1 inner	
Left Leg	1 outer + 1 inner	

Wheel outside	4	
Wheel inside	4	
Wheel Support	2	
Wheel Spacer	4	
Front Plate	1	

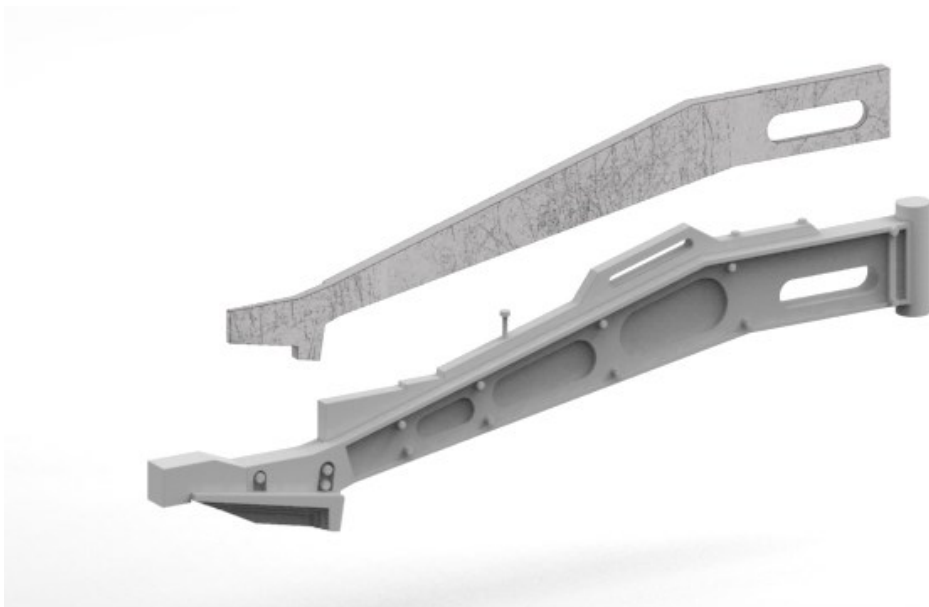


WHEEL ASSEMBLY: PAY ATTENTION TO THE WHEELS SO THAT HAVE THEIR FLAT SURFACES FACING EACH OTHER. THAT WAY THE DETAILED WHEELS ARE ALWAYS SHOWING THEIR BEST SIDE..

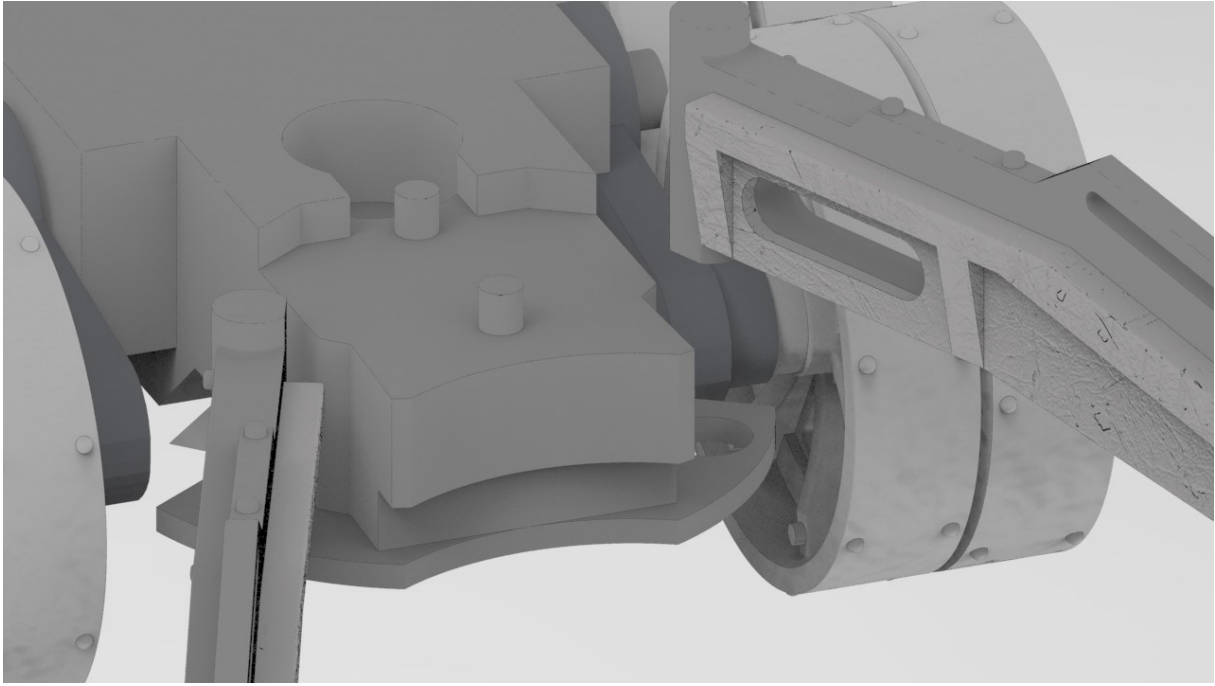
PLACE WHEELS ON WHEEL SUPPORT. USE SPACERS BETWEEN THE WHEELS IF WANTED.

PLACE WHEEL SUPPORT ON THE MAIN BODY.

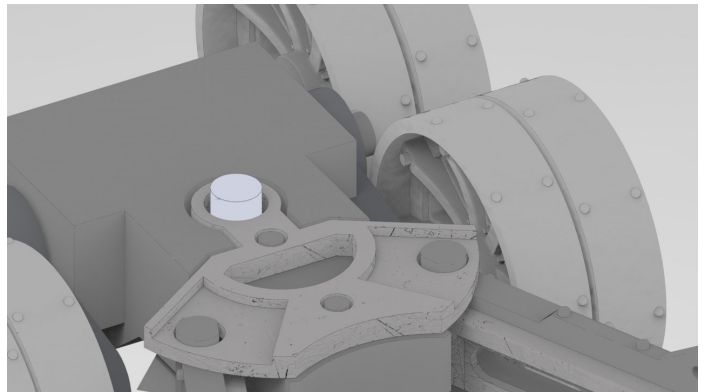
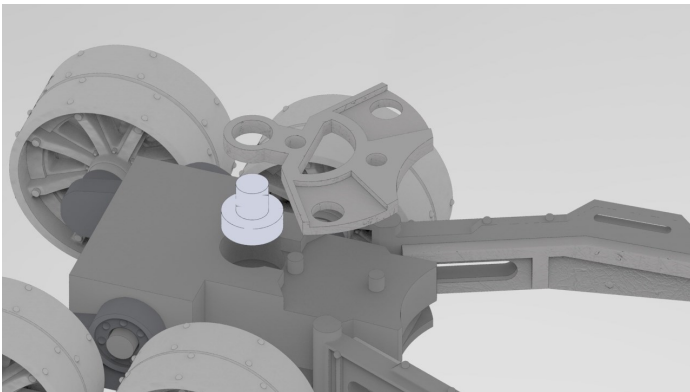
LEAVE THE PARTS UNGLUED IF YOU WANT ROTATION AND MOVEMENT.



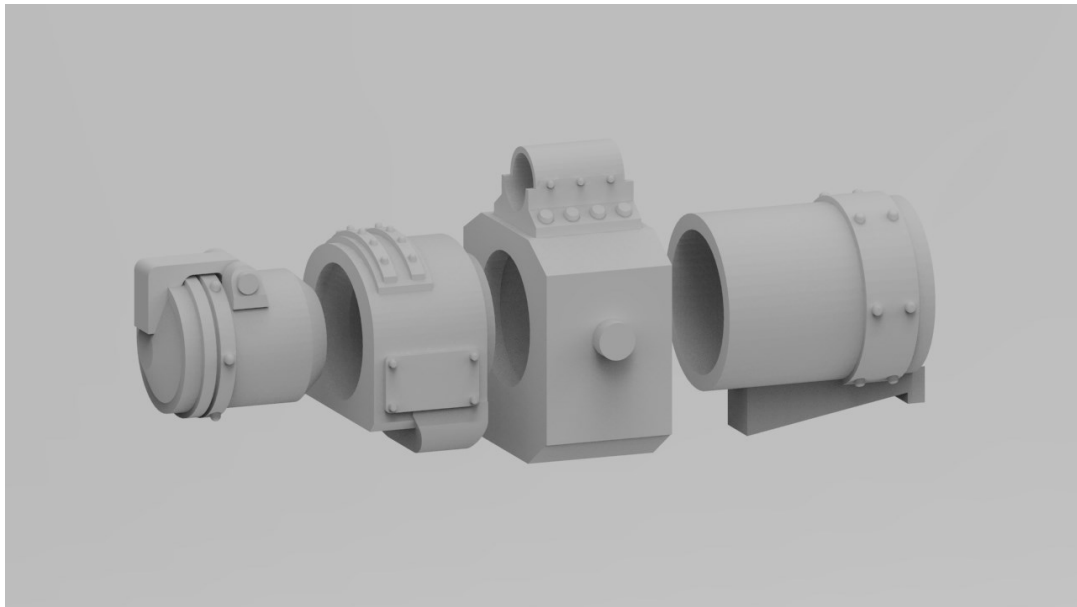
LEG ASSEMBLY: GLUE OUTSIDE AND INSIDE LEG PARTS TOGETHER. THE BIGGER LEG-PART IS THE PART SEEN FROM THE SIDE OF THE HEAVY ARTILLERY



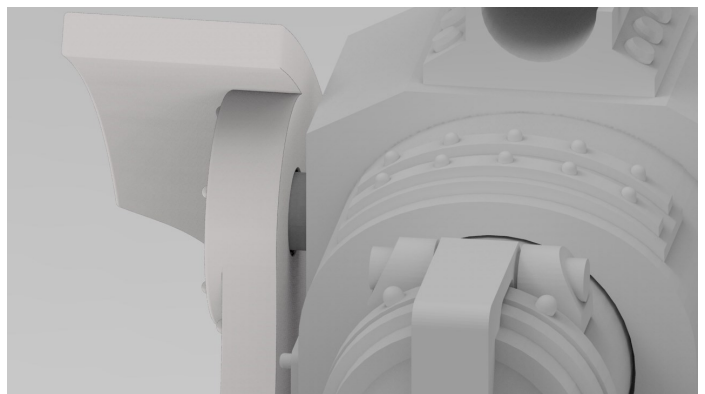
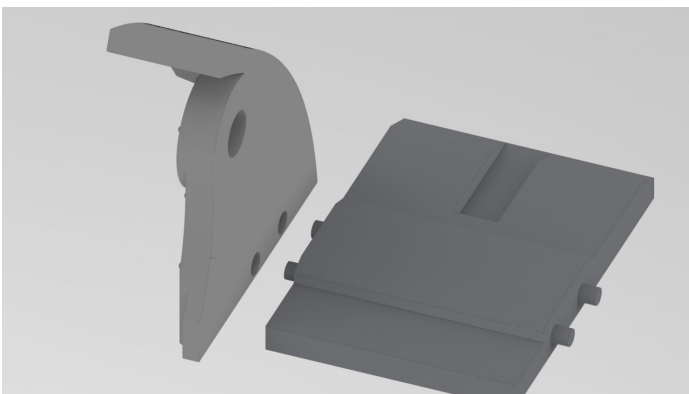
PLACE THE GLUED LEG PARTS IN THE CORRESPONDING HOLES ON THE MAIN BODY. DON'T GLUE THE LEGS TOGETHER WITH THE MAIN BODY TO ALLOW MOVEMENT.



BEFORE LOCKING THE LEGS IN PLACE WITH THE BASE PLATE, MAKE SURE YOU PLACE THE TURRENT PIN FIRST IN THE CAVITY ON THE MAIN BODY. SECURE THE BASE PLATE USING GLUE

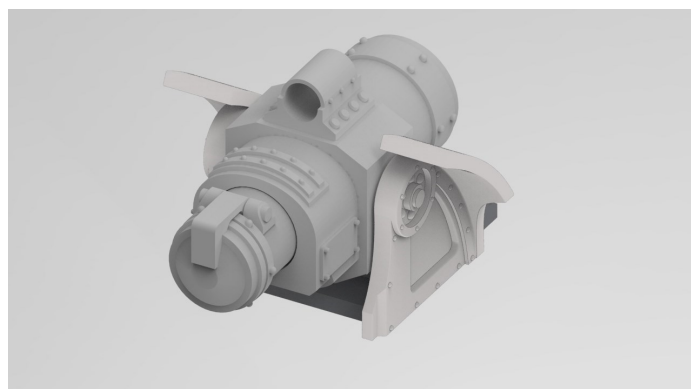


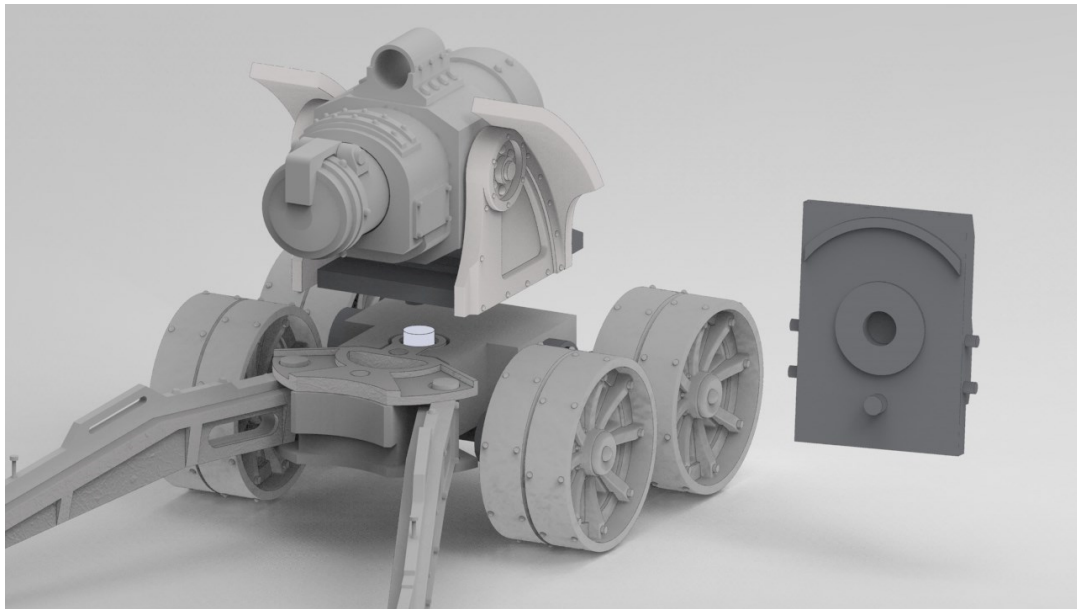
BARREL BASE ASSEMBLY: GLUE THE BARREL BASE TOGETHER. TAKE NOTICE TO HOW THE PARTS FACE EACH OTHER IN THE PICTURE ABOVE.



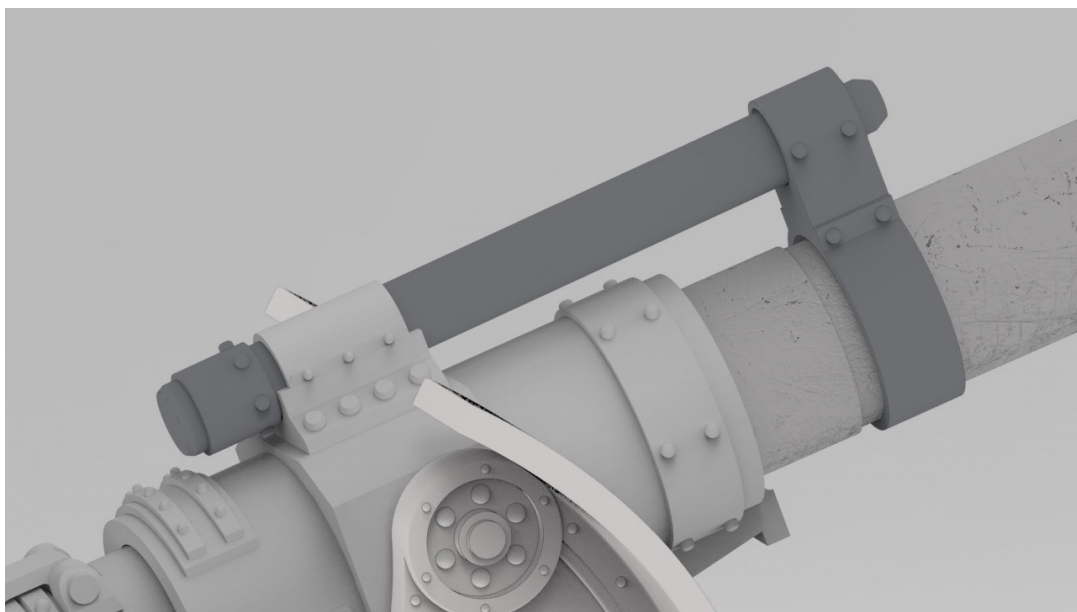
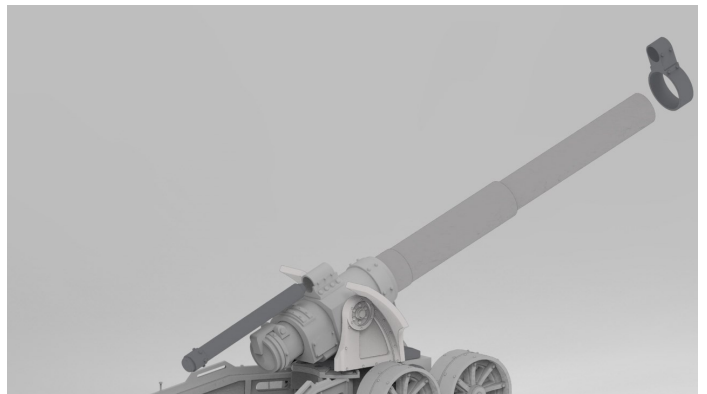
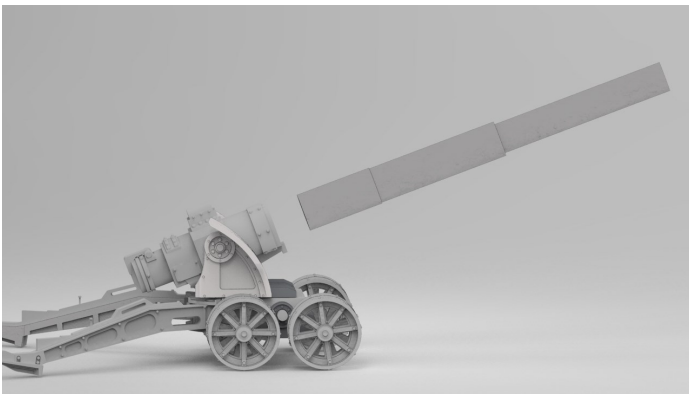
BARREL SUPPORT ASSEMBLY: WHEN GLUEING THE THE SHIELDS TO THE BARREL SUPPORT, PAY ATTENTION TO THE DIRECTION OF THE SUPPORT AND THE SHIELD. USE THE SMALL GUIDE HOLES AND GUIDE PEGS.

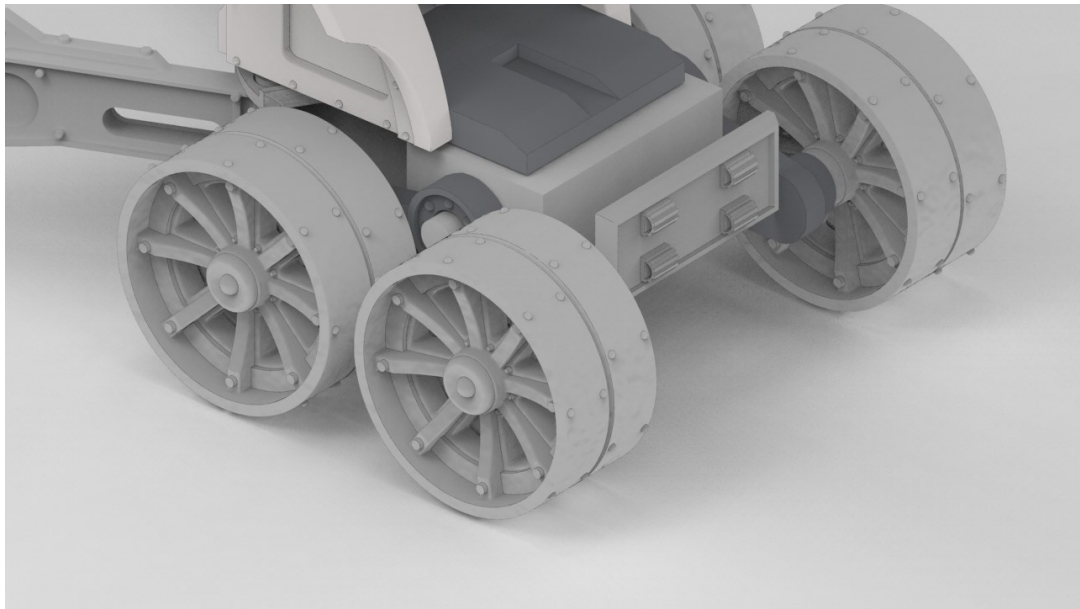
IF YOUR INTENTIONS ARE TO HAVE THE BARREL AT IS MAXIMUM ELEVATION, MAKE SURE TO GLUE THE BARREL BASE TO THE SHIELDS AT THE DESIRED BARREL ANGLE.



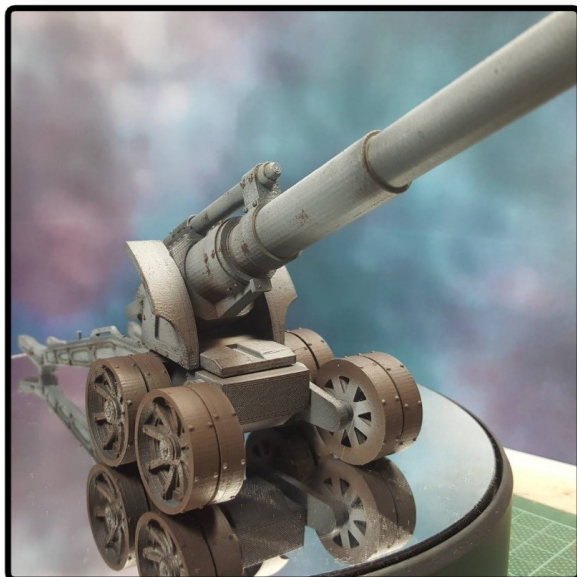
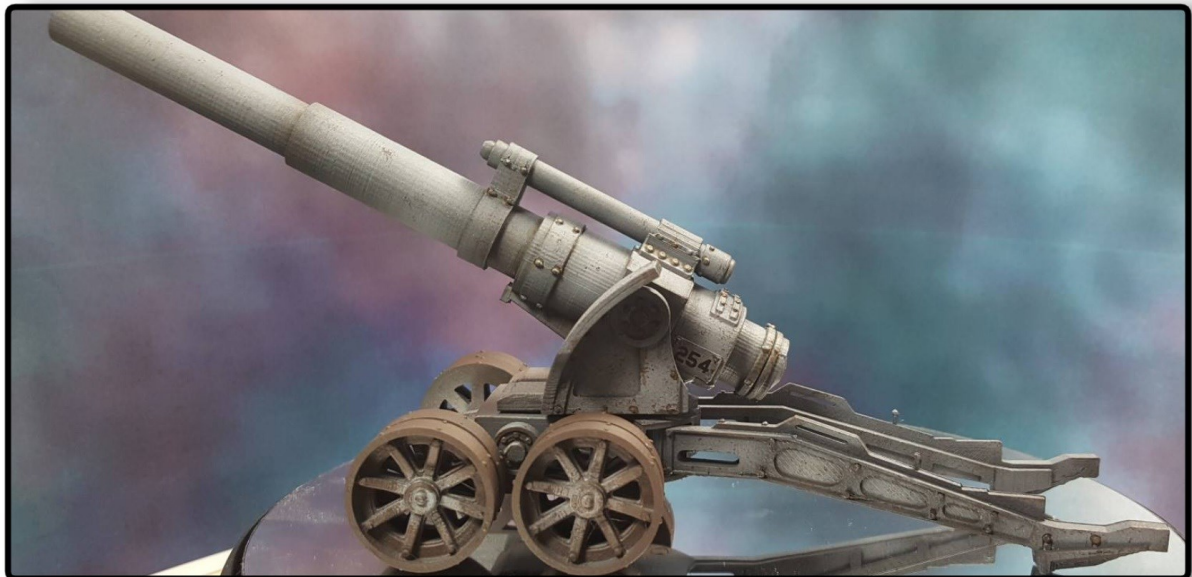


WHEN PLACING THE BARREL BASE TO THE MAIN BODY, MAKE SURE THE TURRENT PIN IS GLUED TO THE HOLE UNDERNEATH THE BARREL SUPPORT.





INSPIRATION IMAGE COURTESY OF THE TALENTED DONALD JOHN AT
"CRUXTERMINATUSMINIS "



@DonaldJohn CruxTerminusMinis